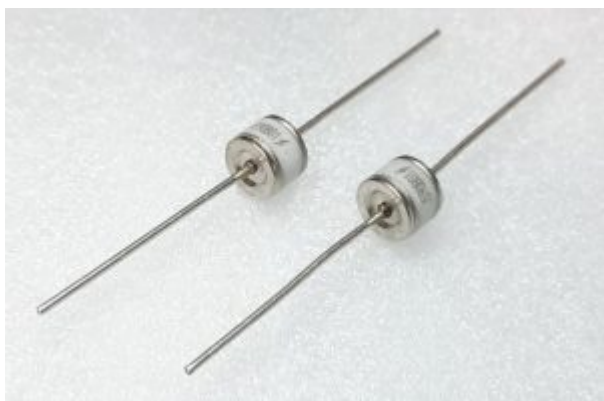
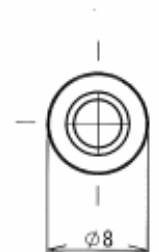
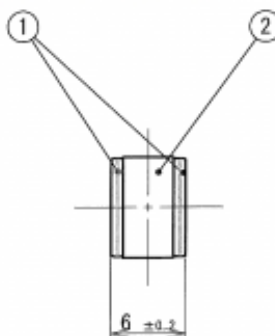


# Y08JS Series



External view



## Characteristics

Part Number (Model A)	Part Number (Model B)	DC Breakdown Voltage 100V/s	Impulse Breakdown Voltage		DC Holdover Voltage	Impulse Life (10/1000μs 100A)	Impulse Discharge Current (8/20μs)		AC Discharge Current (50 Hz)	
			100V/μs	1kV/μs			1 Time	10 Times	9 Cycles 1 Time	1 Second
<a href="#">Y08JS-90A</a>	<a href="#">Y08JS-90B</a>	72-108V	≤ 450V	≤ 500V	≤ 52V	300 Times	20 kA	15 kA	90 A	20A, 10 Times
<a href="#">Y08JS-230A</a>	<a href="#">Y08JS-230B</a>	184-280V	≤ 600V	≤ 700V	≤ 52V	300 Times	20 kA	15 kA	90 A	20A, 10 Times
<a href="#">Y08JS-350A</a>	<a href="#">Y08JS-350B</a>	280-420V	≤ 700V	≤ 800V	≤ 52V	300 Times	20 kA	15 kA	90 A	20A, 10 Times